

# Reference Plan of Easement in Lot 6, Sec8, Tp24, R7, W6M, KDYD, Plan KAP 89068

Pursuant to Section 99(1)(e) of the Land Title Act.  
Scale 1:1000 BCGS 82M006

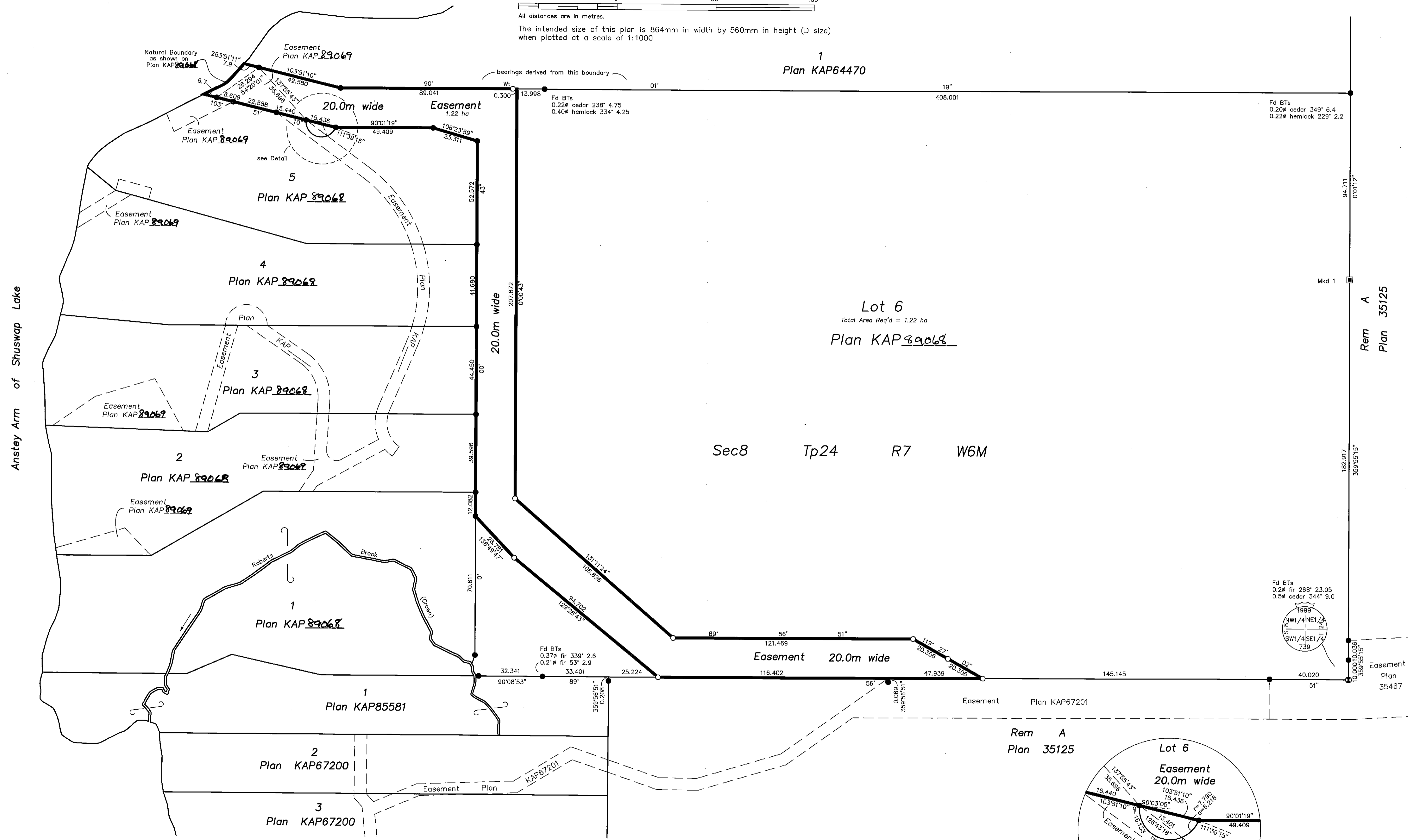
The intended size of this plan is 864mm in width by 560mm in height (D size) when plotted at a scale of 1:1000

## PLAN KAP 89070

Deposited in the Land Title Office at Kamloops, B.C. this 15. day of May, 2009

A. Brass  
Registrar  
LB309230

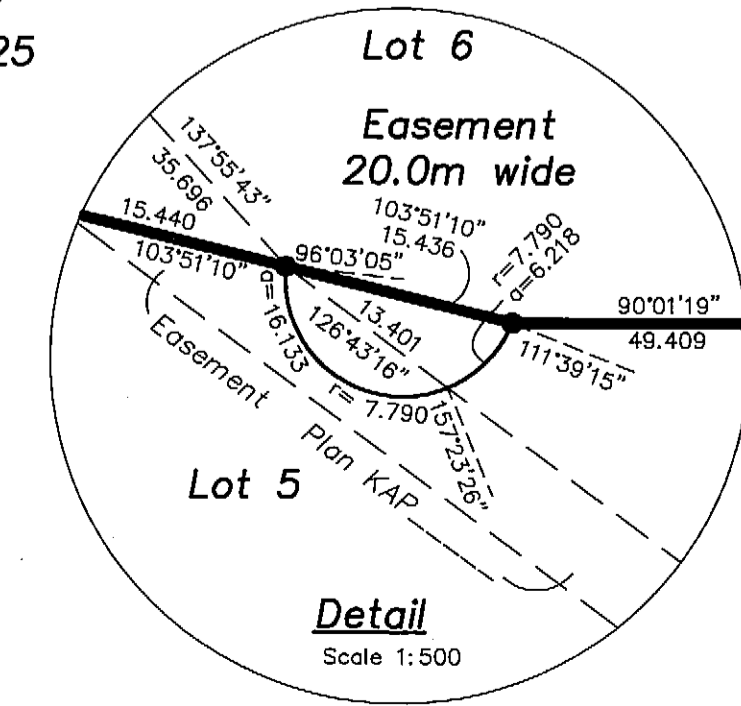
All distances are in metres.  
The intended size of this plan is 864mm in width by 560mm in height (D size) when plotted at a scale of 1:1000



**LEGEND**  
Bearings are astronomic and are derived from Plan KAP64470

- Standard Iron Post Found
- Standard Iron Post Placed
- ⊙ Standard Capped Post Found
- Old Pattern Dominion Iron Post Found

BT bearings are magnetic



This plan lies within Columbia Shuswap Regional District.

I, J. C. Johnson, a British Columbia Land Surveyor, of the City of Salmon Arm, in British Columbia, certify that I was present at and personally supervised the survey represented by this plan, and that the survey and plan are correct. The field survey was completed on the 24th day of November, 2008. The plan was completed and checked, and the checklist filed under #93230, on the 17th day of February, 2009.

J. C. Johnson  
BCLS

BROWNE JOHNSON LAND SURVEYORS  
B.C. AND CANADA LANDS  
SALMON ARM, B.C. Ph.250-832-9701  
File: 783-08 Fb.R111 p.63  
337-08.raw